

符合RoHS

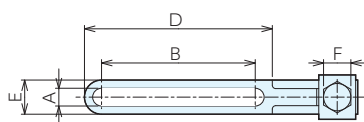
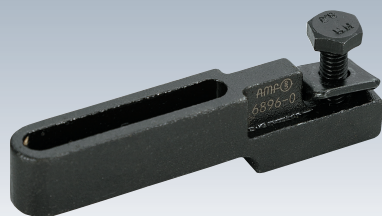
ERON® AMF

CLAMPING ARMS EXTENSION 6896

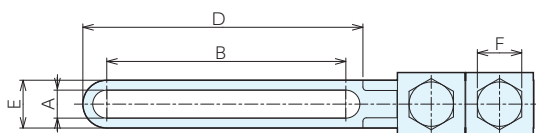
No.E-9989

## 夹紧臂延长部6896

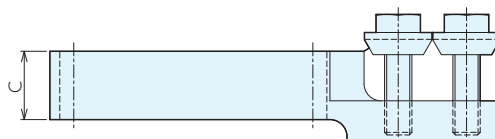
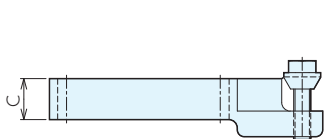
●肘节式压紧夹具专用，可延长夹紧臂。



6896-0~2



6896-3



## ■规格

订单号	型号	螺栓直径 (粗牙)	适用机型
109499	6896-0	M4×0.7	6800 (NI)-0·6830 (NI)-0·6832-0·6820K-0
109500	6896-1	M5×0.8	6800 (NI)-1·6802-1·6803-1·6830 (NI)-1·6832-1·6820F-1·6820K-1·6820M-1
109501	6896-2	M6×1.0	6800 (NI)-2·6800S-2·6802-2·6802S-2·6803-2·6803S-2·6830 (NI)-2·6832-2·6833-2·6820F-2·6820K-2·6820M-2·6821M-2
109502	6896-3	M8×1.25	6800 (NI)-3·6800-4·6800S-3·4·6802-3·4·6802S-3·4·6803-3·6803S-3·4·6830 (NI)-3·6830-4·6830-5·6830S-3·4·6832-3·4·6832-5·6832S-3·4·6833-3·6820F-3·4·6820K-3·6820M-3·4·6821M-3·4

型号	A	B	C	D	E	F	重量g
6896-0	4.2	25	10	32.5	8	7	15
6896-1	5.2	45	12	55	10	8	25
6896-2	6.2	65	14	73.5	11	10	40
6896-3	8.2	70	20	82	14	13	80

基准台面

辅助台面

精密平口钳

夹具单元

夹持工装零部件

定位元件

装入式零件

隔振及防振

千斤顶

平台、测量仪

钻床平口钳

机工虎钳

索引