



ASJ-1A



ASJ-2A



ASJ-3A



ASJ-4A



ASJ-5A

符合RoHS

ERON®

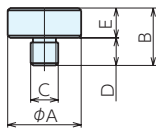
PADS FOR ALUMINUM SCREW JACKS

No.E-9676A

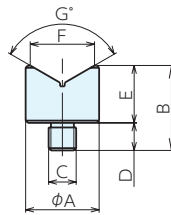
## 铝制千斤顶用附件

材质 A5056

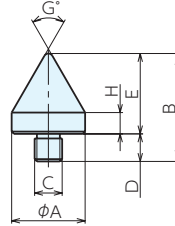
ASJ-1A



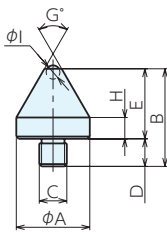
ASJ-2A



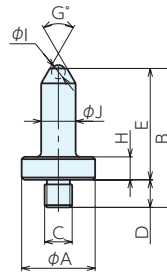
ASJ-3A



ASJ-4A



ASJ-5A



## 规格

订单号	型号	A	B	C (粗牙)	D	E	F	G	H	I	J	重量g
934470	ASJ-1A	32	25	M12×1.75	12	13	-	-	-	-	-	30
934471	ASJ-2A	32	37	M12×1.75	12	25	28	120	-	-	-	45
934472	ASJ-3A	32	47	M12×1.75	12	35	-	60	9.2	-	-	40
934473	ASJ-4A	32	44	M12×1.75	12	32	-	60	9	6	-	50
934474	ASJ-5A	32	62	M12×1.75	12	50	-	60	10	6	15	40

## 参见页

铝制螺纹顶



P.599 ▶

基准台面

辅助台面

精密平口钳

夹具单元

夹持工装零部件

定位元件

装入式零件

隔振及防振

千斤顶

平台、测量仪

钻床平口钳

机工虎钳

索引