



符合RoHS

ERON® AMF

BASES FOR TOGGLE HOOK CLAMPS 6848

No.E-9485A

肘节式钩形夹具用钩座6848

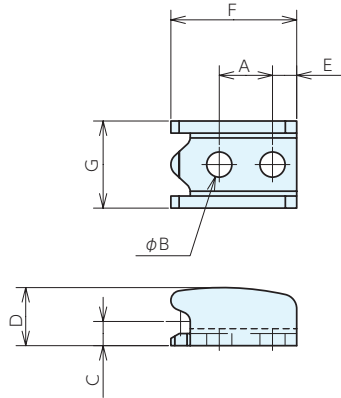
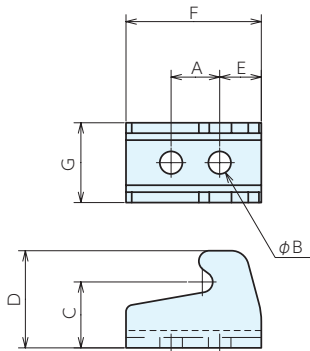
材质 6848G·6848GH·6848GV:SS400
6848GNI·6848GHNI·6848GVNI:SUS304

表面处理 6848G·6848GH·6848GV:镀锌

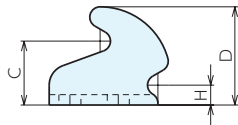
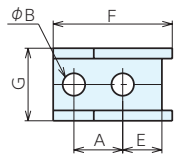
●肘节式钩形夹具6848H、6848V的承座侧。

6848GH(NI)

6848GV(NI)



6848G(NI)



规格

订单号	型号	适用肘节式钩形夹具	A	B	C	D	E	F	G	H	重量g
950564	6848G-4	6848H-4·6848V-4	19	8.5	25	38	15	42	28	8	80
950565	6848GNI-2	6848HNI-2·6848VNI-2	11	5.2	12	19	8.5	24	16	5	20
950566	6848GNI-3	6848HNI-3·6848VNI-3	14	6.5	19	29	12	32	21	6	40
950567	6848GNI-4	6848HNI-4·6848VNI-4	18	8.2	25	38	15	42	28	8	80
972901	6848GH-2	6848H-2	11	5.2	12	18	8	26	18	-	16
972902	6848GH-3	6848H-3	14	6.5	19	28	12	39	23	-	44
972903	6848GH-4	6848H-4	19	8.5	26	38	17	56	30	-	108
972904	6848GHNI-2	6848HNI-2	11	5.2	12	18	8	26	18	-	16
972905	6848GHNI-3	6848HNI-3	14	6.5	19	28	12	39	23	-	44
972906	6848GHNI-4	6848HNI-4	19	8.5	26	38	17	56	30	-	108
972907	6848GV-2	6848V-2	11	5.2	12	5	5	26	18	-	14
972908	6848GV-3	6848V-3	14	6.5	16	6	7	36	23	-	30
972909	6848GV-4	6848V-4	19	8.5	22	8	9	48	30	-	66
972910	6848GVNI-2	6848VNI-2	11	5.2	12	5	5	26	18	-	14
972911	6848GVNI-3	6848VNI-3	14	6.5	16	6	7	36	23	-	30
972912	6848GVNI-4	6848VNI-4	19	8.5	22	8	9	48	30	-	66

基准台面

辅助台面

精密平口钳

夹具单元

夹持工装零部件

定位元件

装入式零件

隔振及防振

千斤顶

平台、测量仪

钻床平口钳

机工虎钳

索引